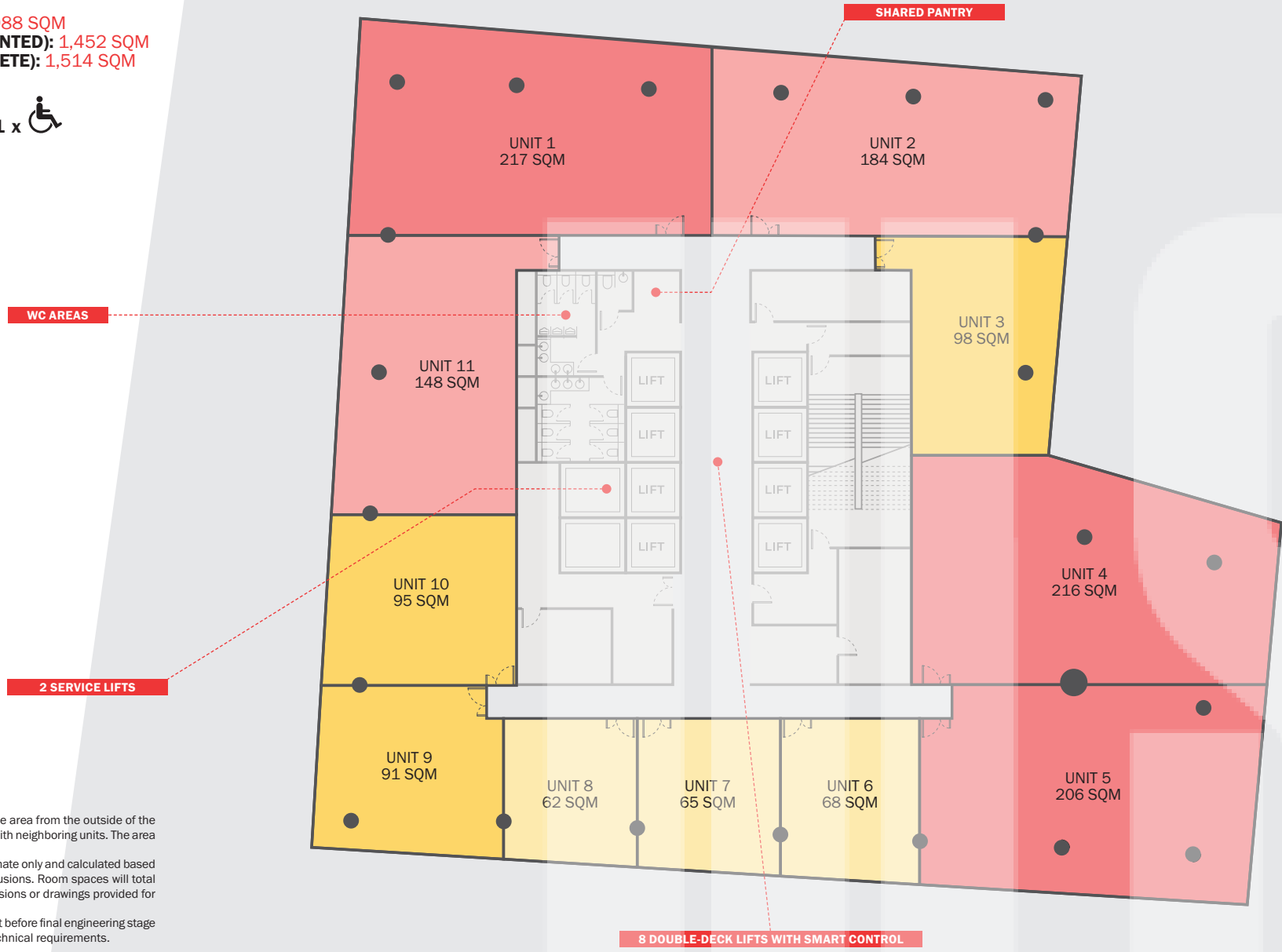


F7-9

TOTAL FLOOR AREA (GROSS): 1,988 SQM
 TOTAL FLOOR AREA (NET SEGMENTED): 1,452 SQM
 TOTAL FLOOR AREA (NET COMPLETE): 1,514 SQM

6 x 3 x 3 x 8 x 1 x



Net SQM Calculation Net calculation is based on the area from the outside of the perimeter walls and from the center of shared walls with neighboring units. The area includes the footprint of the columns.

Offices Areas Measurements for rooms are approximate only and calculated based on expected usable space, excluding walls and extrusions. Room spaces will total less than the total NET space. Please refer to dimensions or drawings provided for the unit with the SPA.

Variance These drawings represent conceptual layout before final engineering stage and are subject to change based on regulatory or technical requirements.

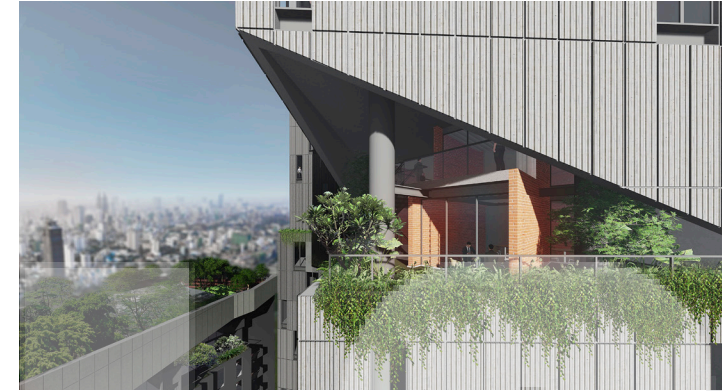
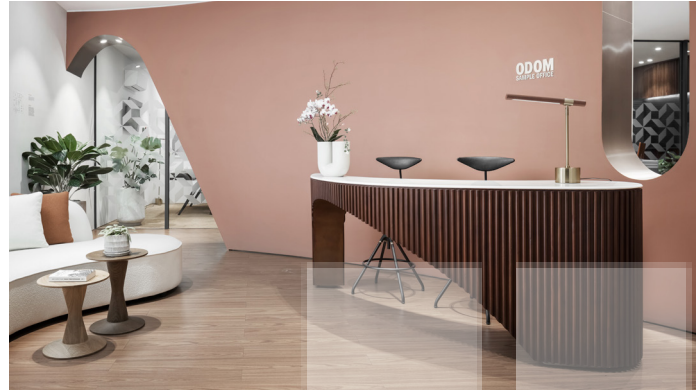


SIZE SQM



F7-9

ODOM buyers can work with the interior designer of their choice to design the perfect office solution. There are multiple layout options for the versatile office spaces available at Odom for companies of all sizes.



DIRECT ACCESS TO SKY VILLAGE 1, COURTYARD, F&B AND RETAIL FROM THESE FLOORS

BUILDING FEATURES

- Smart lift system with two lifts per shaft
- 24-hour access and security
- Reception from 8:00am-7:00pm
- Rooftop members club
- Free wi-fi in the main Odom Tower lobby
- Bicycle parking and shower facilities

OFFICE SPACES

- Raised floors (wiring and services underneath)
- Metered electrical services
- Air-Conditioning ready
- Shared pantry and kitchenette on every floor
- Disability-accessible bathroom
- Buyer fits & finishes

ASSOCIATED FEES

- Management Fee \$3/SQM
- Electricity \$0.25/kWh

NEAREST SKY VILLAGE:

- ⬆ Floors 10-13
- ⬇ Floors 5-6



TOP LEFT AND BOTTOM: WORK WITH YOUR INTERIOR DESIGNER TO COME UP WITH THE PERFECT OFFICE SPACE FOR YOUR COMPANY – IT'S YOUR SPACE, YOU OWN IT.